

LAND OF

FENCING

2024

PRE-GAMES TRAINING GAMES

Georges Tainturier fencing club



THE AREA OF COMPIÈGNE

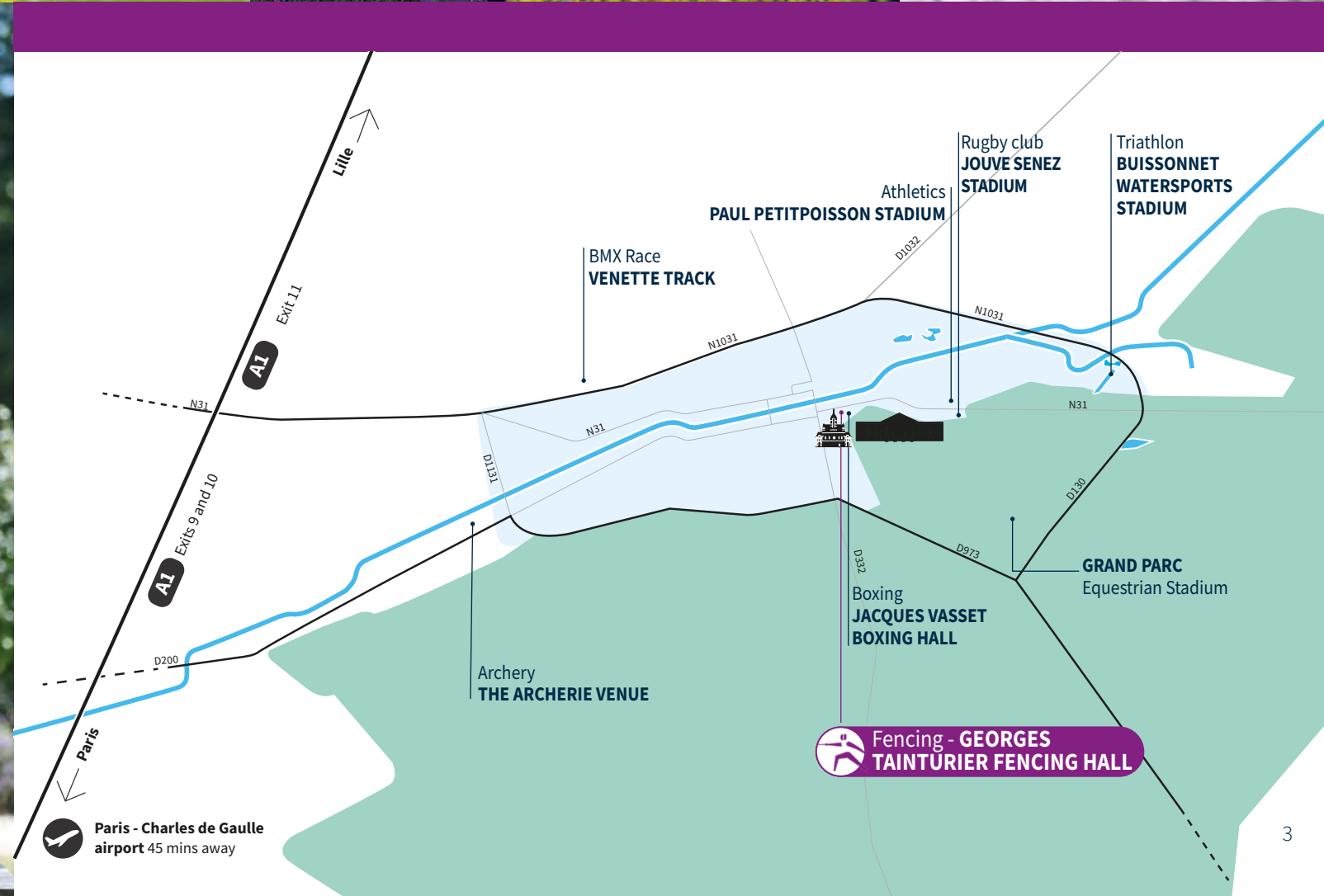
CITY OF SPORT, HOMELAND OF CHAMPIONS!

From the emperor Charles the Bald to the Armistices, Kings of France and emperors and historical figures (Joan of Arc, Georges Guynemer, Coco Chanel...), the imperial city is filled with the traces of a glorious past.

80 km north of Paris and 45 minutes from Roissy Charles de Gaulle airport, Compiègne is a choice residence for all athletes and their teams. The immediate proximity of the Compiègne forest (15,000 ha), the 3rd largest forest in France, provides athletes with a beneficial and rejuvenating environment for their physical and mental preparation, with 620 miles of trails and over 90 miles of cycle paths.

These exceptional training grounds are within a stone's throw from the heart of the city, near neighbourhoods and homes in the typical architecture lined with centuries-old trees. A natural extension of the castle park, which brings sightseers to picturesque villages while giving access to a rich flora and fauna of several thousand species.

All sports facilities are located near the Compiègne town centre, with its shops and services, hotels, and many restaurants.



LAND OF FENCING

GEORGES TANTURIER FENCING HALL



ONE OF THE MOST BEAUTIFUL FENCING CLUBS IN THE NORTH OF FRANCE

The Georges Tainturier Fencing Hall is fully dedicated to the competitive practice of fencing. This room, considered the most beautiful of Northern France, is fitted out in the old equestrian arena built in 1856 for the needs of the CISVA (Army Veterinary Services Training Centre). Later on, this site became the Army Staff School.

REGULATION COMPLIANT EQUIPMENT

This room has **19 tracks**, with integrated reels, all of them electric, spread over an area of 900 square metres:

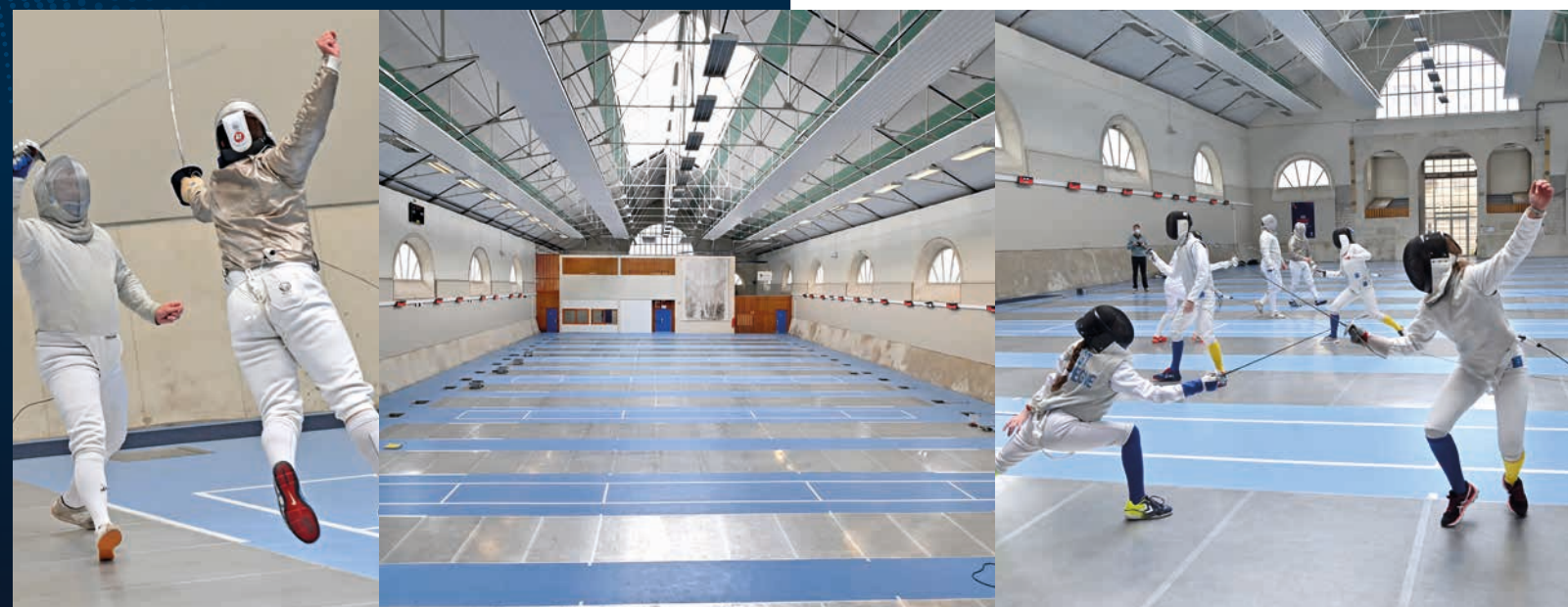
- > **12 metal tracks** equipped with competition displays including time and score, visible to each fencer.
- > **7 training tracks plotted onto the ground**, with display including score and time. In addition, 8 mobile display devices, compliant with international standards, can be placed at the centre of the fencing tracks.

All equipment is approved to the standards of the International Fencing Federation, of the International Olympic Committee and International Paralympic Committee.

The room is suitable for the practice of «**Handisport**» fencing, for all 4 types of disability: motor, auditory, visual or mental. Specific equipment for motor disabilities is possible, thanks to two «**Handifix**» systems that can be placed on the same track and allow the practice of wheelchair fencing.

COMPIÈGNE HERO

Georges Tainturier created the Compiègne Fencing Circle in 1926. He was a member of the France Epee team, and twice Olympic Team Champion, in 1924 and 1932. He also was European Champion in 1926, and France Epee Champion in 1923.



THE STRONG POINTS



- **A meeting room of nearly 100 square meters** available within the fencing circle.
- **Additional equipment on site:** a team sports hall, a boxing room, a climbing wall and a dojo for the complete preparation of athletes. And other sports facilities nearby: rowing, athletics ...
- **Immediate proximity to the Compiègne forest (15,000 ha), the town centre and businesses** (hotels, restaurants) and a very large carpark by the river Oise.
- **Sports facilities are open 24/7.**

20
TERRE
DE JEUX
24

THE AERA OF COMPIÈGNE

SERVICES AND STRONG POINTS TO MAKE A DIFFERENCE



A LARGE PANEL OF POTENTIAL ACCOMMODATION

Compiègne offers a wide range of accommodation, with 4-star hotels and guest rooms, Bed&Breakfast rooms and other atypical accommodation. It can therefore accommodate more than 3,000 people.

STAR-STUDED BISTROT-STYLED GASTRONOMY

Whether they are sportsmen or tourists, our visitors can experience a multitude of catering establishments of all kinds: gourmet cuisine, organic tables, themed or traditional restaurants, with many breweries, but also a wide choice of caterers to tailor to your specific meal plan.

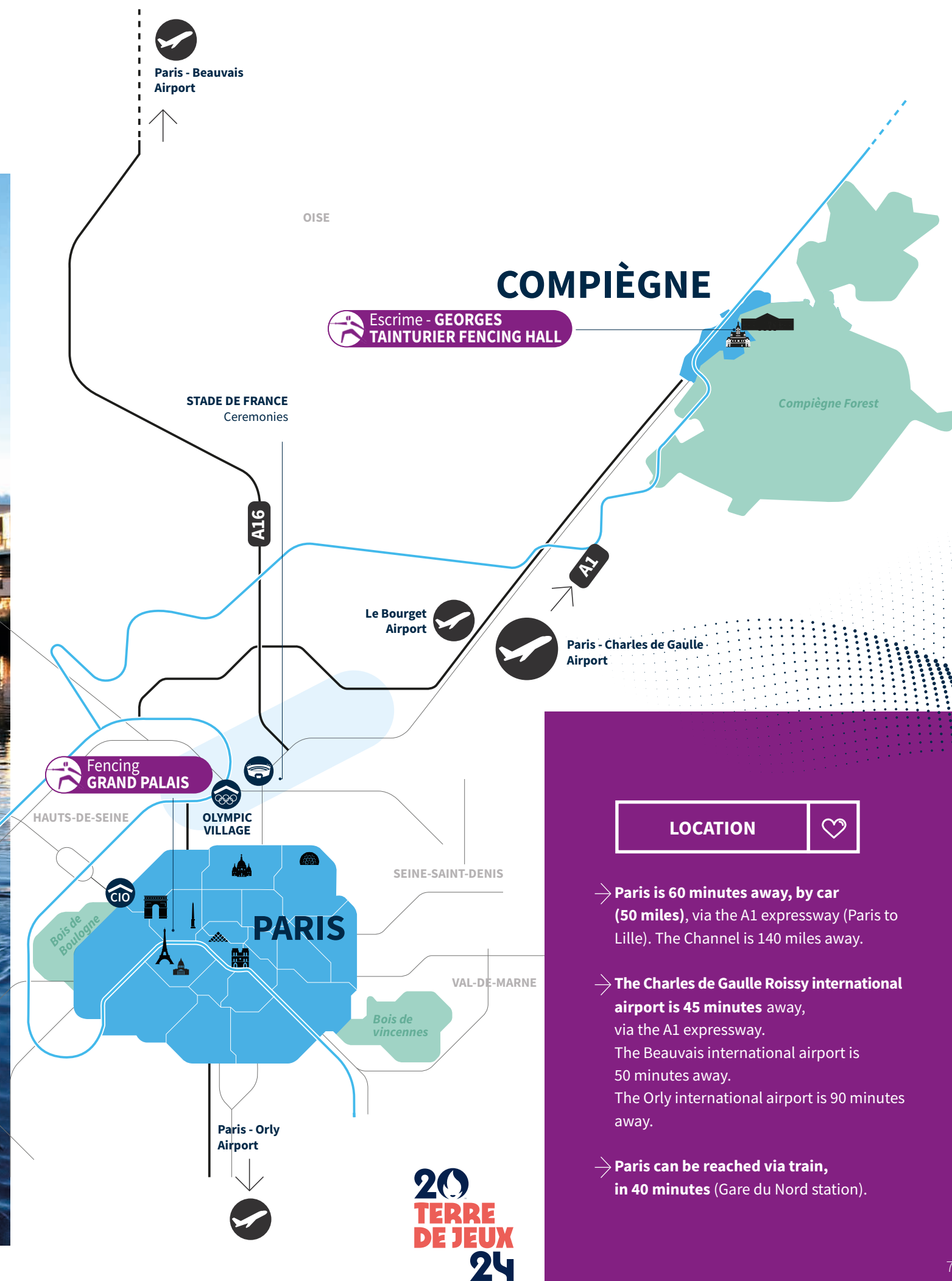
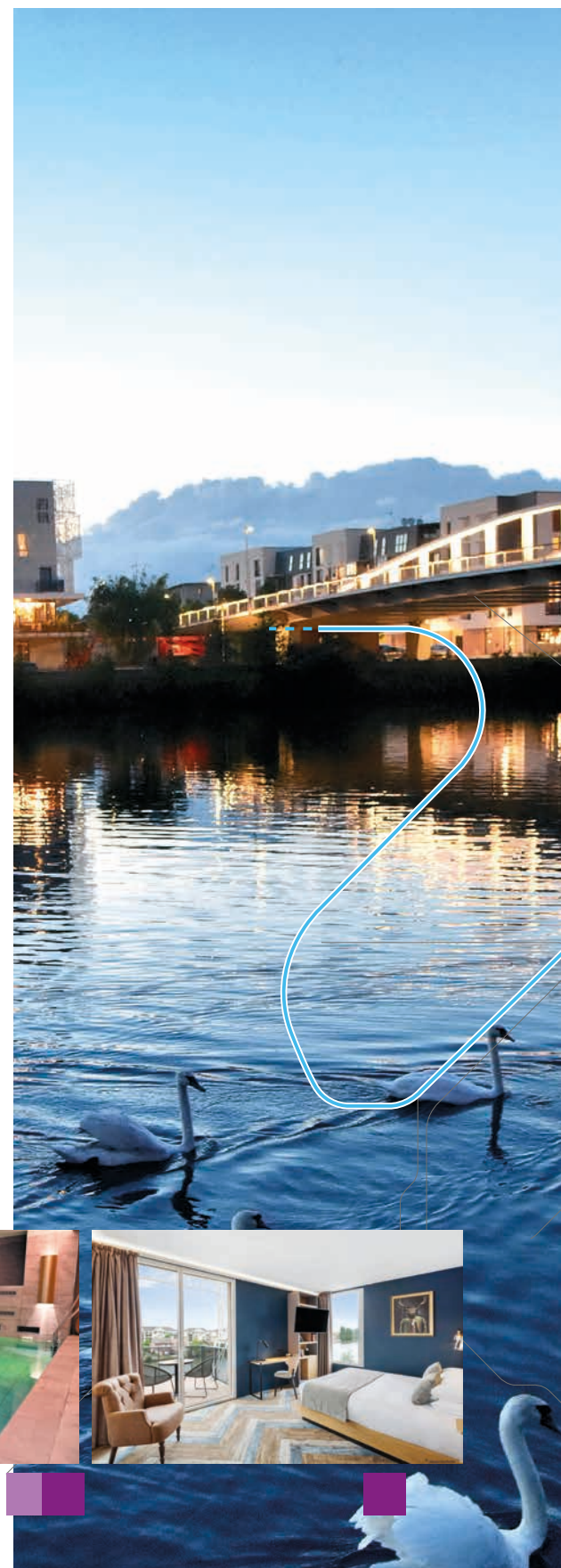
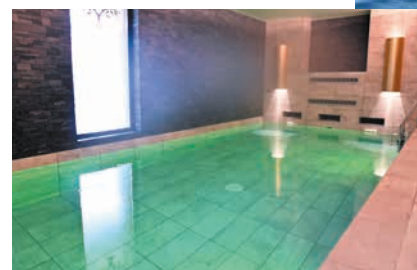
A PERSONALIZED OFFER

Your one sole contact within the Agglomeration of the Region of Compiègne: Antoine Martiak.

In accordance to your needs, a series of services available nearby will be at your disposal:

- balneotherapy, spa, or cryotherapy centres,
- privatisation of one of the swimming pools for the athletes,
- transport service on demand,
- Compiègne forest guide,
- organisation of relaxing tourist circuits and cultural visits.

Antoine Martiak is available for any further information.



LOCATION



- Paris is 60 minutes away, by car (50 miles), via the A1 expressway (Paris to Lille). The Channel is 140 miles away.
- The Charles de Gaulle Roissy international airport is 45 minutes away, via the A1 expressway. The Beauvais international airport is 50 minutes away. The Orly international airport is 90 minutes away.
- Paris can be reached via train, in 40 minutes (Gare du Nord station).



Sports Department 2024

Your contact :

Antoine MARTIAK

Project manager for

« Land of Olympic Games 2024 »

+33 (0)3 44 85 54 18 - +33 (0)6 08 93 12 22

terredejeux@agglo-compiegne.fr



www.agglo-compiegne.fr

ARC - Place de l'Hôtel de ville - CS 10007 - 60321 Compiègne Cédex - France